



UNIVERSITY
OF HULL

Candidate Information



Welcome to the University of Hull

The University of Hull warmly welcomes your application. This candidate pack provides background information regarding the University, the city of Hull and the local area. Information relating to the role and person specification is detailed within the application process for this post which can be found at jobs.hull.ac.uk



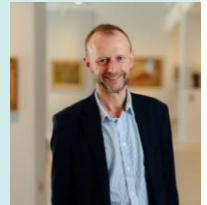
Discover the real Hull

Click to discover the real
HULL

Contents

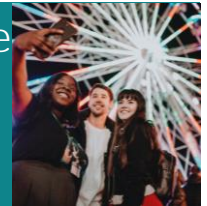
Message from the Vice-Chancellor

4



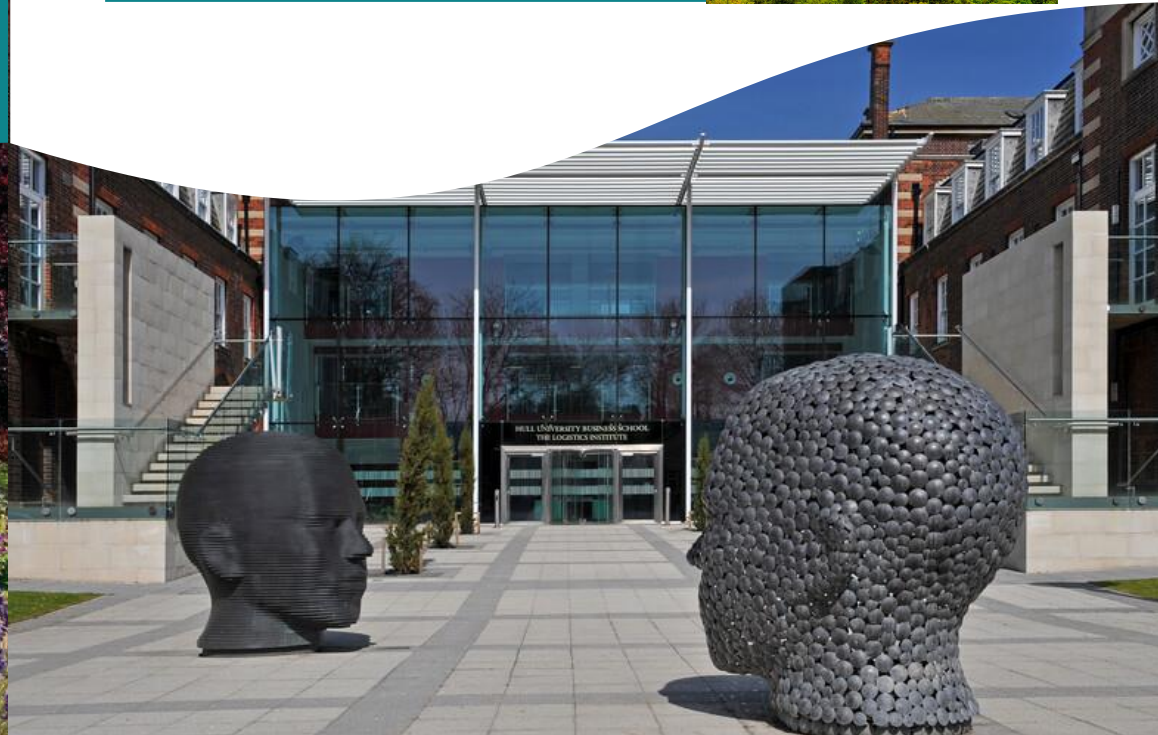
The University of Hull - A Place to Shine

6



Your Life in East Yorkshire

12



Message from the Vice-Chancellor

The University of Hull is on a journey, one that is led by our commitment to delivering excellent research and a fantastic experience.

I am honoured to have taken up the position of Vice-Chancellor at the University of Hull. I was looking for a university where I could make a difference and I truly believe the University of Hull provides that opportunity.

Our University strategy focuses on two of the most important challenges of our generation: environmental sustainability and social justice. These resonate strongly with me and my own academic research interests. I'm looking forward, along with colleagues, students and the wider community, to make a positive difference and help move this agenda forward in a bold and progressive way. High on the agenda is ensuring the student experience and education is world-leading. Hull is an inclusive, welcoming and safe university that provides a great place to study.



Professor Dave Petley
Vice-Chancellor

The Vice-Chancellor, Professor Dave Petley

Prior to his appointment at Hull, Professor Petley was Vice President for Innovation at the University of Sheffield, a role which saw him establish innovation as a key strategic focus for the institution. He began his academic career in roles at the universities of Sunderland and Portsmouth before moving to the University of Durham in 2000. His research focuses on natural and environmental hazards, and he was appointed the inaugural Wilson Professor of Hazard and Risk at Durham in 2006.

He is widely recognised as a world leader in the study and management of landslides and, alongside advising on national and international organisations on the management of slopes, has for over a decade maintained a popular blog on landslides which receives over 500,000 individual visits per year.

While at Durham, Professor Petley held leadership roles including Executive Director of the Institute of Hazard, Risk and Resilience, Dean of Research and Dean of Global Engagement.

In 2014, he joined the University of East Anglia as Pro-Vice-Chancellor for Research and Enterprise before moving in 2016 to become Vice-President for Research and Innovation at the University of Sheffield, where he led the development of a new research strategy, the formation of four new research institutes and a transformation of the University's approach to commercialisation.

Introducing our Vice-Chancellor



Click to discover a message shared from the Vice-Chancellor



The University of Hull - A Place to Shine

We are ambitious about the future: ours, our staff, our students, our alumni and the world around us. Our research and teaching are designed to inspire thinking and expand horizons. As one of England's oldest universities, our motto *Lampada Ferens* - carrying the light of learning - remains as relevant as ever as we continue to empower people to shape the future.

Join a university where everyone matters, everyone can grow, and everyone can make a difference. This is a place to shine.



The Programme Director for Accounting and Finance as well as the receptionist made the conversation much easier - they congratulated me and welcomed me to the course with open arms. That made me so happy that I would finally be able to go to university.

Trisha Nazal

Accounting and Financial Management



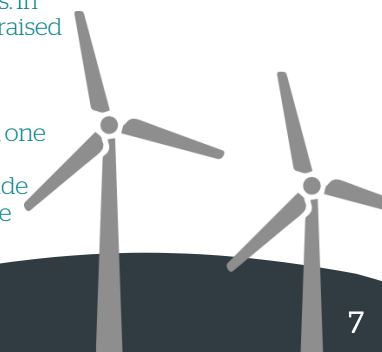
We believe in our students

We believe in our students, unlocking their potential to shape their future. That's why we invest in our students and take the time to get to know them, equipping them with the skills, knowledge, experience and confidence to help them push beyond where they thought they could go, in whatever career they choose, particular, we were praised for excellent student outcomes.

In 2017 we were awarded Silver in the Teaching Excellence awarded Silver in the Teaching Excellence Framework, which recognises and rewards excellence in learning and teaching in higher education institutions. In particular, we were praised for excellent student outcomes.

With 16,500 students, one in six come to the University from outside the UK and from more than 100 countries.

Moreover, they leave with the skills, values and creative potential that will drive their future careers and enable them to contribute to the world as rounded and responsible citizens.





Life-changing research

We look at things in a different light, working together to find new ways of seeing and understanding.

From slavery and emancipation to health and medicine, logistics and supply chain, and energy and environment, our research is making a real difference by addressing global challenges.

The University is ranked in the top 50 UK institutions based on research power in the 2014 Research Excellence Framework, with 62% of the submitted research classified as internationally excellent or world-leading, and areas such as Geography and Computer Science achieving a top five ranking, based on research impact. We're building on our strengths, creating a thriving and inspiring, 'research rich' environment, working towards achieving a top 50 research profile in the next REF.

Confidence in our research capability has never been stronger. In response to the changing and increasingly competitive environment in which we operate, our focus over the last year has been on using our expertise to develop mutually beneficial, long-term collaborative relationships with external partners.

Here's a flavour of our thought-provoking, game-changing research



Yorkshire Cancer Research is investing over £5-million into research programmes to tackle cancer inequalities in Hull.



The University's Wilberforce Institute's life changing slavery research received national recognition when it was awarded the prestigious Queen's Anniversary Prize.

We are extremely proud of the positive impacts we make on the lives of people and societies through our education and research.

A £300-million investment programme in high-quality teaching and learning facilities, IT infrastructure, research laboratories, social spaces and sporting facilities has seen our campus transformed.

A transformation that is already offering significant benefits to students, staff and the wider community. We have also worked with the University Partnership Programme Limited, a leading provider of on-campus student accommodation, to deliver additional, excellent accommodation options for our students.

The University's evolution extends well beyond physical change. Our focus on improving the way that we operate and work with others has helped us to form valuable partnerships and is creating new opportunities for our students, the businesses and other organisations we work with and our research partners.



We are combining the brightest minds with the finest R&D facilities to advance the treatment of wounds.”

Stewart McKinlay,

Vice President of Research & Innovation
Smith & Nephew





Culture at Hull

World-class events, unforgettable experiences

As a producer and supporter of creativity, arts and culture, we seized the opportunity to bring a world-class programme of events to the University and have created unforgettable experiences for our students, staff and the wider community.



Record visitor numbers on campus

In 2017, the University welcomed record visitor numbers and here on campus. Over 60,000 people, including many first-time visitors, enjoyed the impressive range of world-class exhibitions, installations, debates, music and drama, held as part of our cultural programme.



Hosted some of the world's greatest artists

Redeveloped to national standard as part of a £28-million investment in our Brynmor Jones Library, our art gallery hosted some of the world's greatest artists as part of exhibitions with partners such as the British Museum and National Portrait Gallery. 'Lines of Thought - Drawing from Michelangelo to Now', showcased works from prominent masters including Monet, Picasso, Rembrandt and Riley, and the National Portrait Gallery loan exhibition displayed images of stars from JK Rowling to Sir Ian McKellen.

Putting our graduates back in the spotlight

We have also put some of Hull's most famous cultural experts back in the spotlight including graduate and former lecturer Anthony Minghella, the Oscar-winning, Hollywood film director, through a popular retrospective. In addition, a headline grabbing exhibition on the life and work of former University Librarian Philip Larkin offered a new perspective on the man described as 'Britain's Favourite Poet' with previously unseen personal artefacts.

Giving our students a chance to shine

Our campus was at the heart of the action - and so were our students. Thanks to outstanding facilities and partnerships leveraged by staff across the University, our students experienced once in a lifetime opportunity to broaden their horizons and gain unrivalled experience as part of the UK City of Culture 2017 programme.



Katrina Rae,
Drama and Music student



Pride

Humber Street



I came to an open day at Hull and immediately wanted to come here. The staff, the facilities, everything was amazing..."

I'm really inspired by the lecturers here. Not only are they really supportive of you as an individual, many are also performers - they know what it's like to write and play your own material because they do it themselves."

Your life in East Yorkshire

East Yorkshire has something to offer everyone - a place where your family can go walking in the Wolds one weekend and be on the beach the next!



Yorkshire Wolds

Deciding to relocate is a big decision for all the family and you need information on everything, from homes and businesses to sports and events.

As a region, the area is progressive, seeing billions of pounds worth of private sector investment across multiple thriving industries - leading to a diverse array of opportunities, which also include public sector improvements: such as the development of multi-million-pound leisure and cultural facilities. Investment in retail and historical realm works are also being made across all four local authorities - enhancing the area's vibrancy and solidifying its legacy for future generations to come.

The region offers low commute to work times allowing that sought-after work-life balance, lower than average house prices, a fantastic choice of schools and areas of unrivalled natural beauty.

This remarkable region has so much to offer in terms of landscape and heritage, and something for all the family when it comes to shopping, dining and days out. And, with the beautiful countryside of the Lincolnshire and Yorkshire Wolds making up a huge proportion of the area, outdoor lovers will have a wealth of different areas for walking, riding, cycling and running.

When it comes to dining out, the Humber boasts an eclectic array of award-winning

restaurants, gastro pubs and independent coffee shops with fresh and locally-sourced produce from a fantastic selection of shops, with everything from designer boutiques, high street shopping and independent retailers; you'll be spoilt for choice if you're after some retail therapy.

There has never been a better time to make Hull your home, as the cost of living remains among the lowest in the UK and following its incredible transformation - this is only the beginning. The recent £80m redevelopment of Hull's Fruit Market included 109 new homes that sit alongside a hub of independent shops, boutiques and the beautiful Marina.

Ten great reasons to work at Hull



1. We're Going Places

We're investing heavily in transforming our campus into a high-tech learning hub for the 21st century.

2. Career Opportunities

If you have the ambition, we'll help you gain the knowledge and skills to succeed. We want you to have a long-term career with us, so we'll support you every step of the way.

3. A Fantastic Environment

Situated in the leafy suburb of Newland, our beautiful red-brick campus is well known for its friendly atmosphere. We've got Costa, Starbucks and illy coffee shops on site. And our restaurants - which promote fair trade and organic products - cater for all tastes.

4. Great Benefits

We offer a competitive salary, generous holiday allowance, excellent contributory pension schemes, hybrid-working and time off for family priorities.

5. Our People

Work with people whose interests and ambitions match yours. We're investing in recruiting the best possible professors, lecturers, researchers and support staff. There's never been a better time to join us.

6. Superb Facilities

The University has one of the country's finest libraries and excellent sport and fitness facilities, -which we're currently upgrading. We've also got a world-class concert hall, a surround-sound cinema and a fantastic art gallery.

7. Location

Hull is a city with a spring in its step. The 2017 UK City of Culture has benefited from huge new investment, especially in the renewable energies sector. What's more, the surrounding East Riding of Yorkshire contains some of the country's most unspoilt scenery.

8. Affordability

Hull is one of the least expensive cities in Britain. According to Numbeo.com (December 2021), renting a one-bed city centre apartment here is 70% cheaper than in London and more than 30% cheaper than Manchester.

9. Staff Support

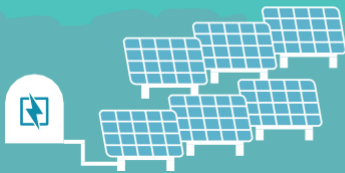
We'll make sure you're well looked after. Our range of services includes a generous relocation package, the Cycle2Work scheme, free eye tests for computer users and access to support and advice when you need it.

10. Opportunities for All

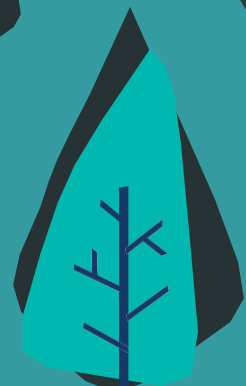
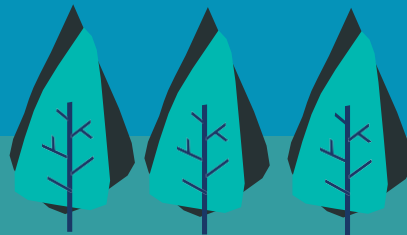
We're committed to eliminating discrimination on grounds of age, disability, gender reassignment, marriage and civil partnership, pregnancy and maternity, race, religion or belief, sex and sexual orientation.



UNIVERSITY OF HULL



UNIVERSITY OF HULL



University of Hull,
Cottingham Road,
Hull, HU6 7RX
United Kingdom

hull.ac.uk



[uniofhull](https://twitter.com/uniofhull)



[universityofhull](https://www.facebook.com/universityofhull)



[universityofhull](https://www.instagram.com/universityofhull)

